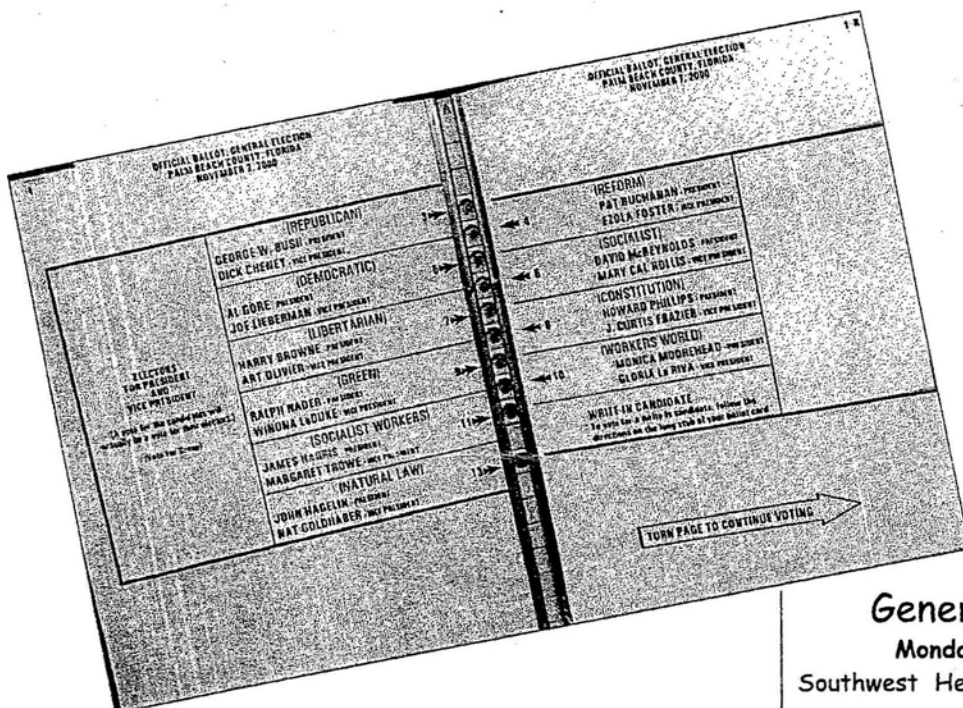


# Santa Susana Mountain Park Association

Volume 30, Issue 9

A Non-Profit 501(c)(4) Organization  
Incorporated August 31, 1971

## March 2001 Newsletter



# IT'S ELECTION TIME AGAIN!

On Monday, April 16, 2001, at 7:30 p.m., the Santa Susana Mountain Park Association will hold its 2001 election for its Board of Directors. Candidates (see next page for their statements) will have the opportunity to talk about their qualifications and experience as well as answer questions about their candidacy. Then the election will be held and the new and incumbent board members will assume office at the conclusion of the meeting. Election shall be by secret ballot. All paid-up SSMPA members can vote for the candidates whose names appear on the ballot, or if you prefer, you can write in the names of the candidates of your choice. Be sure to bring your ballot (see last page) to the meeting. If you do not plan to be at the meeting, you may vote by mailing in your ballot.

### Upcoming SSMPA

#### General Membership Meetings

Monday, 3/19/01 - Jarron Lucas of the Southwest Herpetologist Society, will present a special program on reptiles and amphibians of Southern California. Jarron may bring live specimens for viewing interest.

Monday, 4/16/01 - SSMPA Board Election Night! Come vote, then see Judy Garris' favorite nature slides on the beauty of our local hills and mountains.

\*\*\*

General Membership Program Meetings take place every third Monday of the months September through November and January through May. Program meetings start at 7:15 p.m. and generally conclude by 9:00 p.m. The venue is the meeting room at the Rockpointe Recreation Center, 22300 Devonshire St., Chatsworth, on the south side of the street, one block before entering Chatsworth Park South.

All SSMPA members are encouraged to attend not only General Membership Program meetings but also Board of Directors meetings, which take place at the Chatsworth Park South Visitors Center on the first Monday of the month. Refreshments are served at program meetings.

Do you have an idea for a future program or lecturer? If so, call our program chairman, Dorian Keyser, at (818) 345-3795.

## Candidate Statements

### Judy Garris - President (incumbent)

As president, I have continued working with a dedicated group of volunteers who are committed to preserving the open space and wildlife corridors of the Simi Hills and the Santa Susana Mountains. We attend hearings and meetings and keep abreast of new public land policies, development proposals, land for sale and any activities that will effect the preservation of the natural state of the land in our area. In my spare time I have studied the history of SSMPA to better understand the successful dynamics of activism. I would like us to interact more with the people who are working to expand the Santa Clarita Woodlands which will complete the Santa Susanas' connection to the Angeles National Forest. I believe the Foundation for the Preservation of the Santa Susanas (FPSSM) and SSMPA, both with similar goals, need to work closely together, and if elected president I will work to strengthen our bonds by encouraging periodic joint meetings. I am hoping to inject more "fun" by getting both organizations together for informal gatherings. As president, I will focus our priorities toward these goals and, as I have done in the past year, I will continue to try to increase our resources of public open space for the enjoyment of wildlife and people.

### Dorian Keyser - Vice President (incumbent)

I would like to continue to serve on the SSMPA Board of Directors as vice president. I joined SSMPA in 1991 and except for one year, have been a member of its Board of Directors from 1992 to the present. This past year, I have: 1) Arranged programs for membership meetings. 2) Served on the By-Laws Committee. 3) As a member of the Lands Committee, regularly dealt with the Santa Monica Mtns. Conservancy, LA City and County elected officials and employees, LA DWP for the Chatsworth Nature Preserve, Ventura County Board of Supervisors and employees, Angeles District and State officials of CA State Parks, the Sierra Club, SFV Audubon Society, and private landowners. 4) Helped with other activities and needs of SSMPA as they occur.

### Diana Dixon-Davis - Treasurer (incumbent)

I have been a supporter of environmental causes all my adult life. I have been a member of the Sierra Club since college. I joined the SSMPA shortly after moving to Chatsworth in 1980. I served on Hal Bernson's Parks and Recreation Advisory Committee until I opposed him over the Porter Ranch Specific Plan. I did signature gathering to help qualify the CALPAW Initiative. As publicity chairman for SSMPA 1997-1999 I did monthly press releases, developed press packets for the lobbying for, the hearings on, and then the dedication of the Santa Susana Pass State Historic Park. I have testified before the LA City Council and Planning Commissions in support of creation of Chatsworth Nature Preserve (Reservoir) as well as other issues. I would like to be Treasurer because I have the aptitude and training (a strong mathematical background, a year of basic accounting classes - Pierce College), and I have the experience (as ongoing treasurer for the 38th Assembly District Democratic Committee since 1996, and currently treasurer for Chatsworth H.S. PTSA) where I have handled the books, spreadsheets, and checks and successfully filed required State and Federal Tax forms.

### Sandra Johnson - Recording Secretary

I taught school in the LA School District for 32 years. To survive teaching for so many years, a person needs good organizational skills. The ability to organize is what makes a good recording secretary. I believe in the strength of the Board to be effective in the organization's mission and goals.

### Susan Gerke - Member-at-Large (incumbent)

I have enjoyed being a board member since 1997. I came on the Board as a member-at-large and became treasurer soon after, which job I have held for close to 4 years. I have a willingness to take on tasks that require "close tolerance" and so have committed--with enthusiasm--to serve as newsletter editor for this term of office. I strongly believe in the importance of our organization to educate, preserve and conserve, and I look forward to another year of movement, activities, and whatever we, as a board, create.

### Jim Shirley - Member-at-Large

I am willing to serve on the Board of Directors of SSMPA. My bio: Planetary Scientist at the Jet Propulsion Laboratory (1993 - present), working on the Galileo Mission to the planet Jupiter; author of scientific journal articles in Planetary Science, Seismology, and Solar Physics. First Editor of the Chapman & Hall "Encyclopedia of Planetary Sciences" (1997). MS in interdisciplinary studies (Geoscience and Physics), CSUN, 1995; married to Maureen M. Shirley, with twin girls now 3 years of age. Non-professional memberships include Sierra Club, Worldwatch Institute, Greenpeace, and Earthjustice Legal Defense Fund.

### Jan Miller - Member-at-Large

I have been a member of the California Native Plant Society for about 20 years, a member of SSMPA for about 20 years, and a "sometime" member of the Sierra Club. My aim is to see as much of our local area preserved in its natural state as possible.

Holly Huff - Member-at-Large (incumbent) No statement submitted.

### **The Power of People: Never Give Up!**

A celebratory ribbon of people stretched along an entire 1.3-mile California coastal bluff trail, while a herd of deer watched from the hill above. Why were they celebrating? For years they fought development of a 417-acre parcel of ranchland from Highway 1 to the ocean, encompassing hillside forests, creeks and coastal bluffs. The area lies just south of the southern boundary of the Monterey Marine Sanctuary north of San Luis Obispo. This favorite hiking place--home to a wide variety of plants and animals and a great place to view whales, dolphins and others--was threatened with high density housing by an outside developer, triggering a tug-of-war with Cambria residents. The owner finally agreed to sell, resulting in an intense community campaign to raise \$11 million to purchase this property and protect it forever. Funds were obtained from a variety of sources, including state park bond funds, a Coastal Conservancy grant, county park funds, the American Land Conservancy and others. However, the approximate 6,000 residents needed to raise \$2 million in non-state donations in order to qualify for state funds. Through an incredible community effort, they succeeded in raising \$1 million in just one year. Then an 11th hour donation of land from a local bank worth \$1.1 million put them over the top, and they closed escrow last November.

It's amazing what can be accomplished by people like us -- people who care.

### **The New Liberty Canyon Wildlife Corridor**

On February 23, 2001, a ceremony occurred in Agoura Hills commemorating a much-anticipated land transfer of 107 acres for preservation of open space. Al Abrams, the landowner who turned down more lucrative offers in order to secure this wildlife refuge, said, "I feel like I'm a grandpa to many, many species of animals."

Rep. Brad Sherman (Dem. - Sherman Oaks), who recently introduced legislation with Rep. Elton Gallegly (Rep. - Simi Valley) to expand the Santa Monica Mountains National Recreation Area by 3,700 acres, added, "Our furry friends no longer have to date their cousins."

The Liberty Canyon Wildlife Corridor, which now serves as a gateway to the Santa Monica Mountains, was sold in December to the Santa Monica Mountains

Conservancy. The Corridor is owned and managed by the Santa Monica Mountains Conservancy Parkland.

*(Editor's Note: Watch for a special article in a future newsletter about the dynamics of wildlife corridors.)*

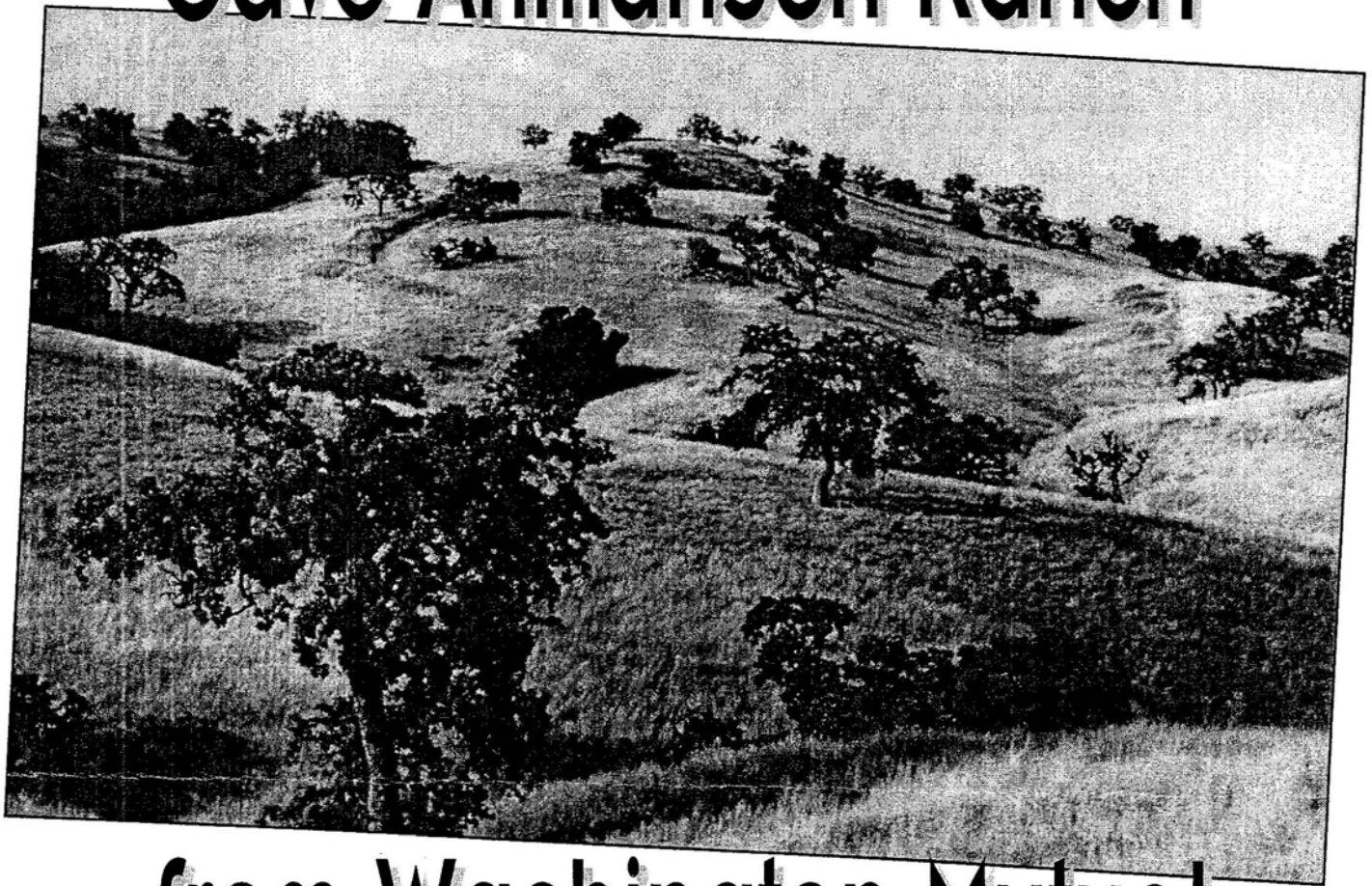
### **The Ongoing Fight to Save Ahmanson Ranch**

In case you haven't heard, the owner of Ahmanson Ranch, Seattle-based Washington Mutual, Inc. (WaMu) plans to develop nearly 3,000 acres of open land, which abuts the far western boundary of Los Angeles County, just beyond Calabasas, into 3,005 homes, with office and retail space. The city's position is that the project would dramatically increase traffic in the West San Fernando Valley and adversely affect the area's air and water quality, but it has so far failed to quash the project, and WaMu has filed to begin the first phase.

Opponents of the project share the following info: The best way for get WaMu to listen to the public is to get the public to take their banking business elsewhere. The web provides a fast and effective method of distributing boycott flyers and organizing people to pass out those flyers. Rather than getting a large number of demonstrators at a single WaMu branch, it is more effective to have a few people at each branch passing out flyers, especially during peak banking hours. So rather than going out to lunch with your co-workers on Friday, for example, print out a few of the flyers, pack a sandwich, and show up at the closest WaMu branch. Pass the flyers out to bank customers. Talk to them and ask them to take their business elsewhere.

The flyer (see other side of this page) is available in both black and white and color versions. The black and white version is optimized for printing on a black and white a laser printer. If your printer gives you the option of setting the screen size, choose a value of around 60 lines per inch. If you have access to a good quality laser printer and photocopier, you can print a master and photocopy the master. Photocopies reproduce the best when the master uses screened pictures (again at around 60 lpi). If you plan to distribute the black and white version, you may want to choose a colored paper for a more noticeable effect. The color version can be printed on an ink jet printer, or on a color laser printer. Go to: [www.ahmanson.org](http://www.ahmanson.org). Once in the web page, click on **BOYCOTT WAMU**.

# Save Ahmanson Ranch



## from Washington Mutual

Ask them to do the right thing. Stop the development of the largest and best remaining natural eco-system in the area and sell the ranch to the public for preservation as parkland. Until they do, take your banking business elsewhere. Say "No" to more traffic and pollution.

Washington Mutual, a Seattle based out of state corporation, acquired Home Savings and Loan and the Ahmanson Ranch. They plan a 3050 home development on this wild and undeveloped region, which features endangered species, wetlands, canyons, seasonal waterfalls, mountains and an upland pasture. WaMu's development will add 46,000 car tips per day, hundreds of tons of air pollution per year, overload the 101 freeway, and further strain the power and water resources of our area. Tell them you don't want the development.



**Send WaMu a message. Take your business elsewhere.**

*For More Information:* Save Open Space • 818-226-8315 • [www.ahmanson.org](http://www.ahmanson.org) • [info@ahmanson.org](mailto:info@ahmanson.org)

## Every Little Bit Helps Save Our Planet

1. *Recycle.* Recycling just our Sunday newspapers can save over 500,000 trees every week! Recycle all "clean" paper (no food attached), hard plastic, glass, aluminum and other metals — rinsing food or beverage containers first.
2. *Don't use plastic shopping bags.* Plastic bags are not biodegradable. Either use paper bags and recycle them, or bring a cloth bag with you when you go shopping.
3. *Snip six-pack rings.* When six-pack holders find their way to the ocean, marine life can strangle on them. Snip each circle before discarding.
4. *Save the ozone layer.* Avoid products containing chlorofluorocarbons (CFCs) like aerosol cans and styrofoam. When using mailing services, request environment-friendly box fillers instead of styrofoam "popcorn." Have home and car air conditioners checked for leaks.
5. *Use phosphate-free detergent.* Liquid detergents are usually phosphate-free. As manufacturers generally recommend more detergent than necessary, use less detergent per load.
6. *Use less water.* Don't leave the water running while brushing your teeth — this wastes 3 to 5 gallons of water every minute. Use front-loading washing machines, which use significantly less water than top-loading models. Aerate your faucets by installing an aerator. This can cut an average family's water usage by 50% — saving over 3,300 gallons of water per year.
7. *Use less electrical energy.* Review the yellow energy-guide tags on major appliances and purchase appliances that consume the least energy. Turn lights off when leaving a room.
8. *Carpool to work or school.* Try to carpool at least one day a week. Ride your bike or walk wherever possible.
9. *Stop junk mail.* You can stop delivery of some of your junk mail by sending your name, address, and request to remove your name from mailing lists to: Mail Preference Service, Direct Marketing Association, P.O. Box 9008, Farmingdale, NY 11735-9008. While you will continue to receive junk mail from organizations that do not subscribe to the DMA, the amount of junk mail (and paper wasted on you) will significantly decrease. After 5 years, you must re-register with the DMA to remain off these mailing lists. For more on the DMA, see the Better Business Bureau web page on stopping junk mail at <http://www.newyork.bbb.org/library/publications/sub0033.html>. To stop delivery of Advo mail (with pictures of missing children), call 1-860-285-6100. To stop Val-Pak coupon pack delivery: Mail the envelope (with your request) to 1661 Worcester Rd, Framingham, MA 01701 or contact Val-Pak at 1-800-676-6878. To get off the Carol Wright mailing list, call 1-800-67-TARGET. Performing a web search using the words, "stop junk mail," will provide you with even more information, including how to stop unwanted telephone calls.

### RED-STEMMED FILAREE. ALFILERILLA. CLOCKS. PIN-CLOVER.

*Erodium cicutarium*, L'Her. Geranium Family.

*Leaves.*—Chiefly radical in a depressed rosette; six to ten inches long; dissected into narrow toothed lobes. Stem-leaves smaller. *Flowers.*—Pink; four to eight in an umbel; parts in fives. *Petals.*—Three lines long. *Stamens.*—Five perfect, with flattened filaments; five reduced to mere scales. *Carpels* and styles one or two inches long; separating upward from a central axis into twisted, bearded tails. *Hab.*—Throughout the State.

The name "alfilerilla" is Spanish, coming from *alfiler*, a needle, and refers to the long, slender beak of the carpels. By corruption it has become "filaree."

This plant is found in abundance everywhere, and is one of our most valuable forage-plants. It varies greatly in size, and becomes very rank in growth where the soil is rich. Ordinarily, it makes its appearance soon after the beginning of the rainy season, as a rosette of leaves lying upon the ground, and later it sends up its reddish stems. Its seed-vessels look like a group of fantastic, long-billed storks, and the long beaks of the carpels, as they separate from the central axis, begin to curl about any convenient object. They are thus widely disseminated in the hair of animals and the clothing of people. Children call them "clocks," and love to stand the seed up in their clothing and watch the beaks wind slowly about, like the hands of a timepiece.

The Wild Flowers of California  
by Mary Elizabeth Parsons  
(available at the Chatsworth Library)



RED-STEMMED FILAREE—*Erodium cicutarium*.

## **Development Foes Win the Race for Calabasas City Council Positions**

Incumbents James Bozajian and Lesley Devine were reelected to the Calabasas City Council in the election of 3/6. Together with newcomer Michael Harrison, all 3 oppose the Ahmanson Ranch housing development. "For the next four years I look forward to making sure that Ahmanson Ranch doesn't go through," Bozajian said, claiming victory. Bozajian, an LA. County Deputy DA, said during his campaign that he will push the LA City Council to find ways to buy the property and preserve it as open space. Environmental consultant Devine and real estate attorney Harrison have vowed to fight WaMu by appealing to its shareholders in an attempt to create internal opposition and enough publicity to stop the project.

## **What to Do For Injured or Orphaned Wild Animals**

Local wildlife expert Rebecca Dmytryk will be the guest speaker for Sierra Club Singles on March 22 at 7:00 p.m. at the Los Angeles Zoo. Dmytryk, founder of the Malibu-based California Wildlife Center, will be giving a presentation entitled "Wildlife Paramedics." Along with her exciting wild animal rescue stories and video clips, she will inform the audience of what to do should they come across an injured or orphaned wild animal. She will also talk briefly about her recent experiences helping oiled birds in the Galapagos.

"In the Los Angeles area, even in the heart of the city, wildlife abounds. And living in such close proximity to wild animals means that each person will, at some point, find a wild creature in need of assistance. They can best help that animal by knowing the right thing to do and who to call. In my lecture I will be giving out tips on how to best handle certain emergencies involving wildlife--how to keep safe while providing the appropriate care until an expert can be found. I also include information on baby wild animals which will be so prevalent in the Spring and Summer months ahead." Come and bring children age 8 and up!

## **A Vote to Seek Parkland Funds**

LA City Council recently voted unanimously to look for funds to acquire as public parkland more than 400 acres of Westside land now scheduled to be part of the proposed Playa Vista development. The Council

wants to expand the wetlands preservation and recreation zone and transfer it all to public ownership. Playa Vista opponents said the council vote was a positive move but wish it stopped the project altogether.

## **Land Purchased for Backbone Trail**

A 245-acre parcel of land between the city of Malibu and Ventura County has been purchased by the Mountains Recreation and Conservation Authority. The property, known as "Little Sycamore," is next to Little Sycamore Canyon Road, north of Mulholland Highway. It was purchased for \$2 million with funds from the county's voter-approved Proposition A park funds. The trail, a critical link in the Backbone Trail, stretches from Will Rogers State Historic Park in Pacific Palisades to Point Mugu State Park in Ventura County and has oak woodlands and a stream habitat. It is reported that it will eventually be incorporated into either the state or national park system.

## **Bolsa Chica Mesa to be Saved**

The Huntington Beach City Council voted 3/5 to seek funding to purchase Bolsa Chica Mesa, beginning a process that could ultimately preserve a majestic bluff overlooking the largest protected wetland area in Southern California. Bolsa Chica is a key stopover for migrating birds on the Pacific Flyway.

## **No Horses in *This* Chatsworth Development**

Due to the "housing shortage in LA", on Feb. 22 the LA Planning Commission approved a controversial plan to build 21 single-family houses on the 6.7-acre lot at the NW corner of Chatsworth St. and Topanga Cyn. Blvd. The Chatsworth-Porter Ranch Community Plan will be amended to allow a zone change from A2-1 to (T)RE11-1, and land use designation from Very Low I Density Residential to Very Low II Density Residential. The General Plan Transportation Element will be amended to downgrade the street designation of Chatsworth Street (between Topanga Cyn. Blvd. and Farralone) from a secondary highway to a collector street.

The location of this non-horsekeeping development has been the center of Chatsworth's equestrian community for generations. Opponents of the plan fear loss of Chatsworth's rustic character with the

amendment of the Chatsworth/Porter Ranch General Plan and the zoning change, opening the door to similar developments and possibly endangering the horsekeeping rights of neighbors in the future.

A public hearing relating to the environmental determination and to this proposed 20-lot single family, vesting tract development on 6.67 net acres on property zoned A2-1 and proposed to be zoned RE-11, is scheduled for **March 22, 2001 at 11:30 a.m.** at **Sherman Oaks Woman's Club, 4808 Kester Ave., Sherman Oaks.** Written communications must be received prior to the hearing date. Send comments to: Dept. of City Planning, Subdivision Unit, Rm. 1540, 221 No. Figueroa St., LA, CA 90012-2601. (Refer to Vesting Tentative Tract No. 53292.)

### SSMPA News

In 1975, SSMPA board members Jan Hinkston and Glenn Bailey, with the goal of keeping some open access to hiking trails in the Devil's Canyon/Deer Lake Highlands/Twin Lakes area with inevitable development plans looming on the horizon, found a

parcel and SSMPA purchased it for \$1,000. It was a 25' X 70' plot, nestled in among hundreds of others. SSMPA has been paying taxes on it since then -- at first \$10 per year, then \$20, then \$70. The area where this parcel is located (to be called Chatsworth Ridge Estates) is owned by The Presidio Group. The Santa Monica Mountain Conservancy negotiated with the developer with some very good results, including hiking and equestrian trails, open spaces and the guarantee that Topanga Cyn. Blvd. will never extend north through the mountains. Last year, the Presidio Group offered SSMPA \$10,000 for our parcel. After much deliberation, the SSMPA Board of Directors decided that we would sell it with the caveat that SSMPA will openly oppose the development as being too dense (500+ homes) and that we would put our good investment return to good use.

As a member of this organization, you are invited to provide your input for potential use of these funds. Write to: SSMPA, Attn: Board of Directors, P.O. Box 4831, Chatsworth, CA 91311-4831.



### GOOSE TALES

It is almost a month now since the Canada Geese flew off to have their young and to enjoy a northern summer. For a while after they disappear, those of us who've been getting up at 4:30 a.m. twice a week for five months do not really believe they've gone, and we get up anyway and drive out to Chatsworth or Encino or Pierce because...it almost feels as though we've been abandoned. The whole focus of our lives now has to change. No one who "counts" discusses this but the signs are there, and we find comfort in each other's company until gradually we regain our "normal" lives. The counts were quite high this year, we don't know why. Work has begun on the data collected over the last eleven years, and hopefully soon we might have some interesting things to report.

The two stray dogs I wrote about last time, the ones who had been living in the Wildlife Area of the Sepulveda Basin for the last two years, have been rescued and are now adopted into loving homes. Thanks to the dedicated animal lovers in the community, the people who took the time to call city agencies and council members, and to the Daily News' Beth Barrett for a concentrated approach to the problem. Both the wildlife and the two adventuresome dogs were helped, and it does show what can be done when we all work together. We need to all be proud of this complicated effort which really paid off! If anyone would like further information or would like to make a donation to the animal rescue organization, you may call me or Beth Barrett at the Daily News.

**Earth Day** is approaching and what an opportunity to educate children (and adults) about how to respect the Earth! Will you join the Canada Goose Project, the Chumash Indian tribe, the Herpetologists Society and the Sierra Club on **Sunday, April 1** for a few hours of delightful walking about the Ecology Lake and watching the Chumash welcome us with their ceremonial dances? If you would like to help out by leading one of the walks or giving the Environmental Etiquette talk to a small group of visitors, please come to our "**dress rehearsal**" on **March 17**, at the Valley Circle gate. We would love for you to participate and of course we would greatly appreciate the help. March 17, 9 a.m. sharp, dressed for earth-work.

Be seein' you!



## MARCH 2001 HIKES

Hikers need sunscreen, lugsoles, socks, a hat & water. Serious rain cancels.

**Stagecoach Trail & Exploration Series hikes are offered by Santa Susana Mtn. Task Force (SSMTF) of the Sierra Club. Rim of the Valley Hikes are sponsored by the Santa Monica Mountains Conservancy and the Mountains Recreation & Conservation Authority.**

**Stage Coach Trail Hike** Sunday, Mar. 25. Interpretative hike into history in our Santa Susana Pass State Historic Park. Meet at 9:00 am for the 4-mile (700 ft. gain) loop up the Stage Coach Trail. Bring water and a snack in a back or hip pack. From Topanga Canyon Blvd., turn west on Devonshire and drive into Chatsworth Park South to the second parking lot by the Recreation Building. Lee Baum (818) 341-1850.

**San Fernando Valley Audubon Society Hikes** Saturday, Mar. 10. Birdwatching hike for beginning adults and school children from 8:30 until 11:00 a.m. at the Sepulveda Basin wildlife area. Directions: Exit 405 Fwy at Burbank Blvd, go W on Burbank 1/4 mi, turn north (right) on Woodley, go 1/4 mi to first possible R turn, turn R, go 1/4 mi to wildlife area parking. Look for people with binoculars.

**Rancho Simi Trail Blazers Hikes** Sunday, Mar. 18 & 25. Meet 4 pm at Rocky Peak trailhead at end of Rocky Peak Rd off Santa Susana Pass. Strenuous, 5 miles RT. Thursday, Mar. 22 & 29. Meet at 6 pm at Chumash trailhead. Take 118 Fwy to Yosemite exit. Go north on Yosemite, turn right on Flangan Dr. Trailhead is at the end of Flangan Dr. Moderate, 5 miles RT. Saturday, Mar. 31. Circle X Ranch - Mishe Mokwa Trail to Sandstone Peak. Moderate 7 MRT hike with 1500' elevation gain/loss. See a wide variety of vegetation, spectacular rock formations, and the highest peak in the Santa Monica Mtns. This hike is not within the jurisdiction of the Rancho Simi Rec & Park Dist. Meet 8 am near Donut Delite at the corner of Madera & Royal. Bring 2 qts. water & lunch.

**Rim of the Valley Hikes** Sunday, Mar. 18, 2-4:30 pm. Easy to moderate 2.5 to 3 miles round trip, 100' elevation gain/loss, naturalist-led walk into Sage Ranch. Directions: From the 101, exit Valley Circle heading north. From Simi Valley exit Topanga Blvd., west on Plummer to Valley Circle heading south. Head to Woolsey Cyn intersection. Turn and follow the signs to Boeing & Sage. Turn right at the top of the hill onto Black Cyn. Rd. The entrance to the park is 200 feet from the intersection. Park inside the gate. You will be fascinated as you explore the beauty of wildflowers and other natural features found in the backcountry. (805) 492-2184. Saturday, Mar. 24, 9:15 am - 3:45 pm. Happy Camp and Beyond! See panoramic views of Simi Valley, Moorpark, and even to the Channel Islands! Eight miles round trip, up over 2000' (1300' gain/loss). Bring boots, lunch, binoculars & 2-3 qts. water. Directions: 14105 Broadway, Moorpark. From the 101 & 118 Freeways, take 23 North, exit New Los Angeles Ave. Go west to 4th signal (Moorpark Ave.), turn right. Go 2.6 miles beyond the railroad crossing to a sharp left turn. DO NOT TURN LEFT but continue straight and make an immediate right turn onto Broadway Ave. Meet at parking lot at the end of Broadway (.4 miles from turn). (805) 529-4828.

**Sierra Club Hike** Sunday, Mar. 18. Ahmanson Ranch: Moderately-paced 6-8 exploratory hike in seldom visited Las Virgenes and Cheseboro Cyns. Meet 9 am N end of Las Virgenes Rd (exit Ventura Fwy at Las Virgenes). Bring water and lunch.

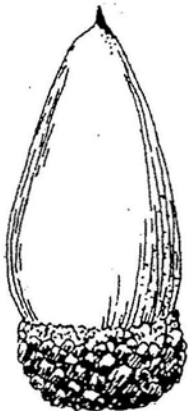
Thanks for renewing your membership to SSMPA! Loretta & Colin Shields, Dalia & Dorian Keyser, Ed Embree, Jerry Davis, Georganna Beuerman, Willem & Cheryl Rietveld and Leon & Shirley Brown. Welcome to our new member, Rhonda Scott. A special thanks to members Bunny & Bud Levine and Jack & Barbara Levin for lighting up the evening of Feb. 6th. At our newsletter party, we heard great vacation and personal interest stories, and learned that 3 of these wonderful people are artists. (You can see Bunny & Bud's work at a group show at The Atelier, 21501 Devonshire until March 31st) After only 1 hour the February newsletter had been folded, stapled, labeled, sorted and was ready for Jack's delivery to the P.O. the next day.

**About this newsletter:** If you would like to submit an article for publication in this newsletter, send it to SSMPA, Attn: Newsletter Editor, P.O. Box 4831, Chatsworth, CA 91313-4831. Susan Gerke, Editor



## SANTA SUSANA MOUNTAIN PARK ASSOCIATION

WE INVITE YOU TO JOIN / RENEW / REJOIN S.S.M.P.A. (Please circle one.)



valley oak

Investing in the future of our communities and its resources is probably one of the best expenditures of our time and efforts. Return this cutoff with your contributions to help ensure our futures. Please make checks payable to SSMPA and send to SSMPA, P.O. Box 4831, Chatsworth, CA 91313-4831.

- Senior or Student (\$5.00)     Individual (\$10.00)     Family (\$15.00)  
 Business or Organization (\$25.00)     Life Member (\$100.00)

Name: \_\_\_\_\_ Phone: \_\_\_\_\_  
Address: \_\_\_\_\_ Fax: \_\_\_\_\_  
City/State/Zip Code: \_\_\_\_\_ Email: \_\_\_\_\_  
Special Interest/Expertise: \_\_\_\_\_



INSTRUCTIONS: If you are an individual member, mark your votes in one of the ballots below. If you have a family membership, use both ballots to indicate your votes. Bring your ballot to the General Membership Meeting on Monday, April 16th, or mail it to: SSMPA, Attn: Election Committee, P.O. Box 4831, Chatsworth, CA 91313-4831.

### SSMPA 2001 BALLOT

The Elections Committee of the Santa Susana Mountain Park Association has considered and approved the following candidates for the 2001 SSMPA Board of Directors. Please vote for ONE candidate for each of the following offices by circling the printed name or by writing in the name of a candidate of your choice.

<b>President:</b>	<b>Judy Garris</b>	<b>OR</b>	_____
<b>Vice President:</b>	<b>Dorian Keyser</b>	<b>OR</b>	_____
<b>Treasurer:</b>	<b>Diana Dixon-Davis</b>	<b>OR</b>	_____
<b>Recording Secretary:</b>	<b>Sandra Johnson</b>	<b>OR</b>	_____
<b>Member at Large:</b>	<b>Susan Gerke</b>	<b>OR</b>	_____
<b>Member at Large:</b>	<b>Jim Shirley</b>	<b>OR</b>	_____
<b>Member at Large:</b>	<b>Jan Miller</b>	<b>OR</b>	_____
<b>Member at Large:</b>	<b>Holly Huff</b>	<b>OR</b>	_____

### SSMPA 2001 BALLOT

The Elections Committee of the Santa Susana Mountain Park Association has considered and approved the following candidates for the 2001 SSMPA Board of Directors. Please vote for ONE candidate for each of the following offices by circling the printed name or by writing in the name of a candidate of your choice.

<b>President:</b>	<b>Judy Garris</b>	<b>OR</b>	_____
<b>Vice President:</b>	<b>Dorian Keyser</b>	<b>OR</b>	_____
<b>Treasurer:</b>	<b>Diana Dixon-Davis</b>	<b>OR</b>	_____
<b>Recording Secretary:</b>	<b>Sandra Johnson</b>	<b>OR</b>	_____
<b>Member at Large:</b>	<b>Susan Gerke</b>	<b>OR</b>	_____
<b>Member at Large:</b>	<b>Jim Shirley</b>	<b>OR</b>	_____
<b>Member at Large:</b>	<b>Jan Miller</b>	<b>OR</b>	_____
<b>Member at Large:</b>	<b>Holly Huff</b>	<b>OR</b>	_____

We encourage any member who lives in or near the Santa Susana Mountains or Simi Hills to become an active member in SSMPA's effort to protect these area's wildlife corridors. Speaking at City Planning hearings to educate about our wildlife corridors would be great, yet any type and amount of voluntary service is always appreciated. You may be able to contribute an article to the newsletter, man a table of SSMPA merchandise, participate in a committee. . . To find out how you can volunteer for the SSMPA, call Judy Garris at 818-346-7654 or Susan Gerke at 818-704-9304.

March 19, 2001, 7:15 PM Program Meeting: Rockpointe Recreation Center  
April 2, 2001, 7:30 PM Board of Director's Meeting: Chatsworth Park Visitor's Center  
April 16, 2001, 7:15 PM Program Meeting: Rockpointe Recreation Center



Thanks to the folks at the Office Depot store on Topanga Canyon Boulevard south of Victory for the donation towards the duplication of our newsletter. We very much appreciate it!

If the expiration date on your label is marked in **pink**, your SSMPA dues have expired. Please send in your dues if you wish to continue your SSMPA membership and to receive our newsletters. If it's already paid, kindly disregard this notice.

If the expiration date on your label is marked in **blue**, payment of your SSMPA membership dues is due this month.  
Finally, if the expiration date is marked in **green**, payment of your dues is requested next month.

Santa Susana Mountain Park Association &  
Foundation for the Preservation of the Santa Susana Mountains  
P.O. Box 4831  
Chatsworth, CA 91313-4831

ADDRESS SERVICE REQUESTED

Non-Profit  
US Postage  
Paid  
Van Nuys CA  
Permit No. 761

LIFE Member  
Nancy Razanski  
22149 James Alan Circle  
Chatsworth, CA 91311-2051

30  
D